

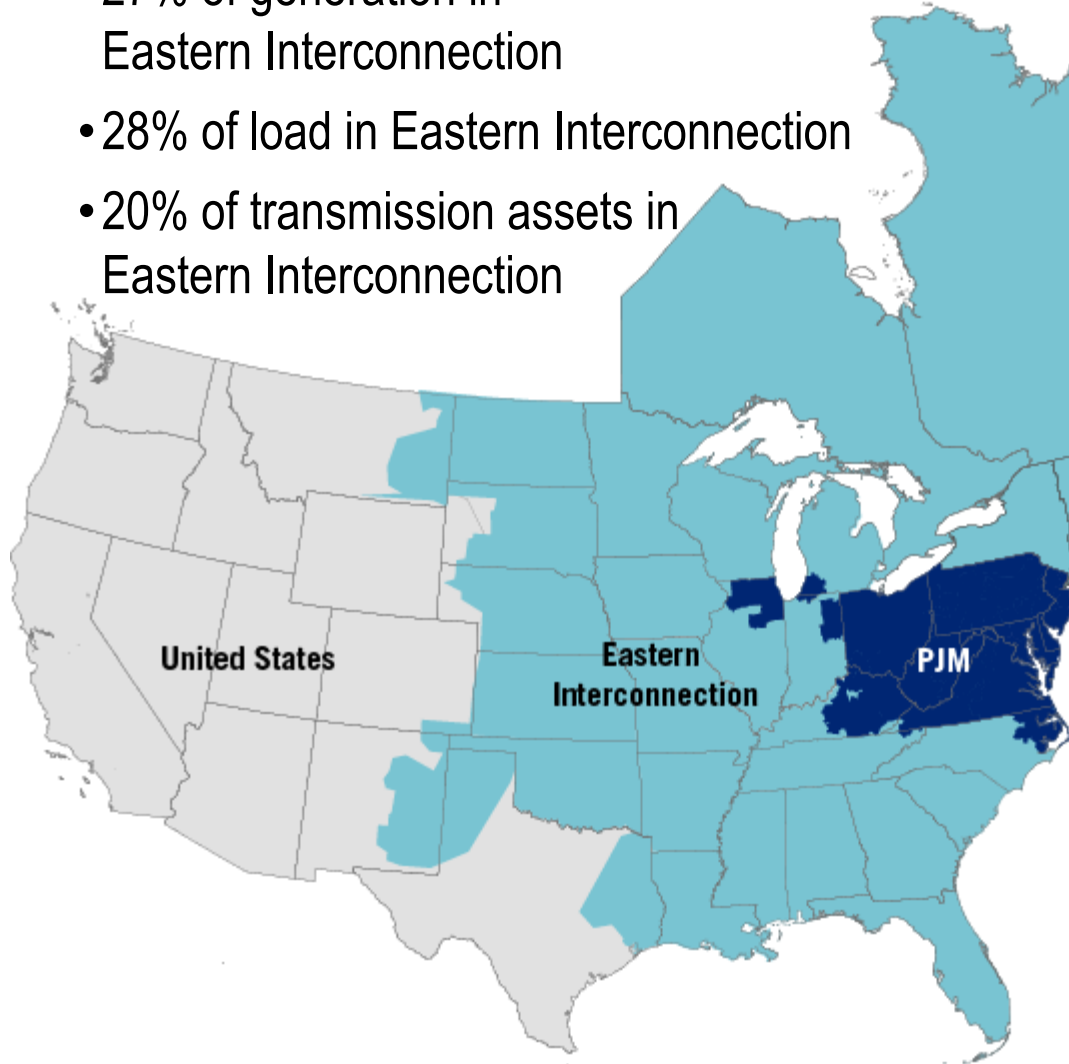
PJM Overview: Market and Regulation Interests Great Lakes Symposium

Sarah Eichorn

PJM Interconnection

To be the electric industry leader – today and tomorrow – in reliable operations, efficient wholesale markets, and infrastructure development.

- 27% of generation in Eastern Interconnection
- 28% of load in Eastern Interconnection
- 20% of transmission assets in Eastern Interconnection

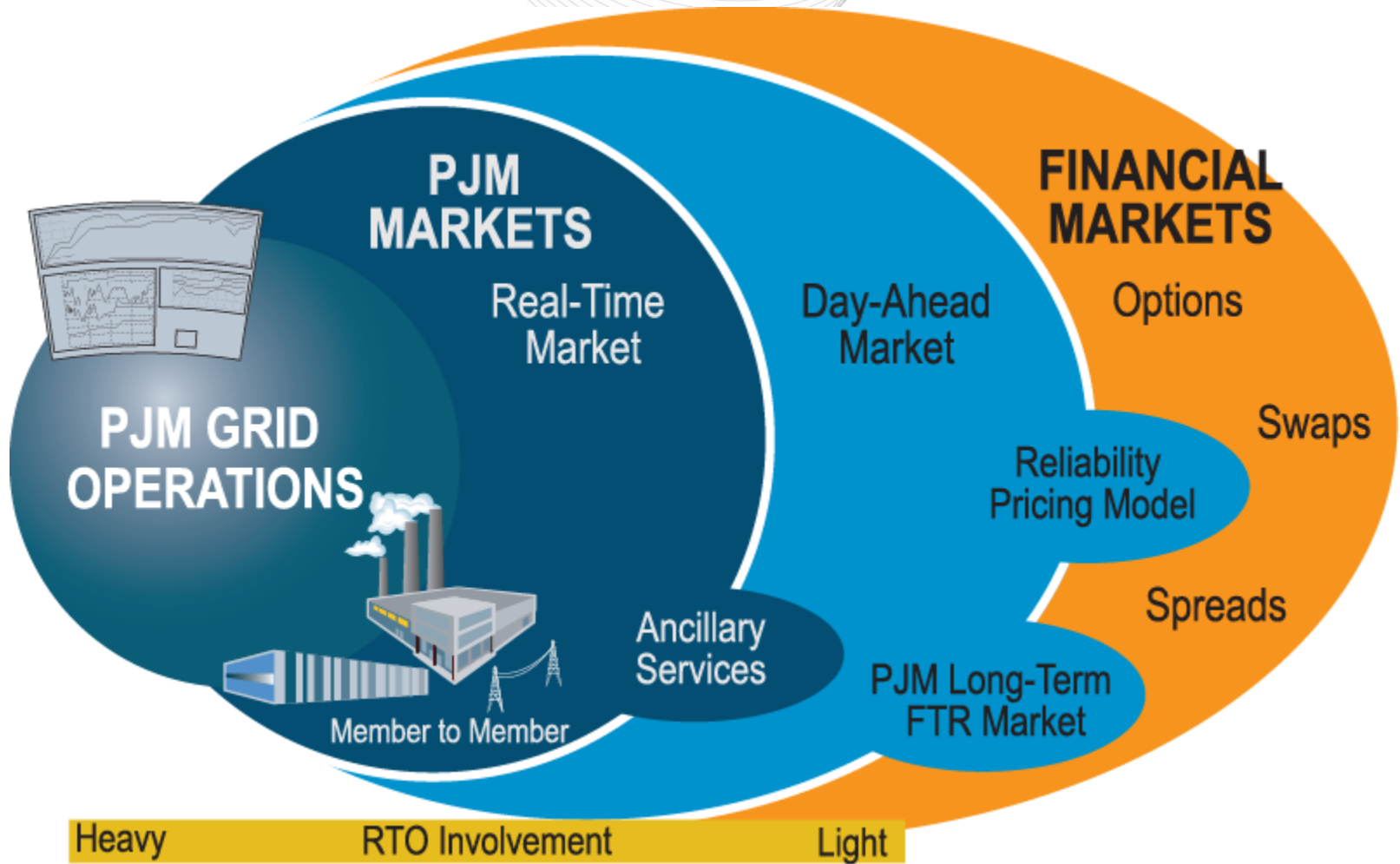


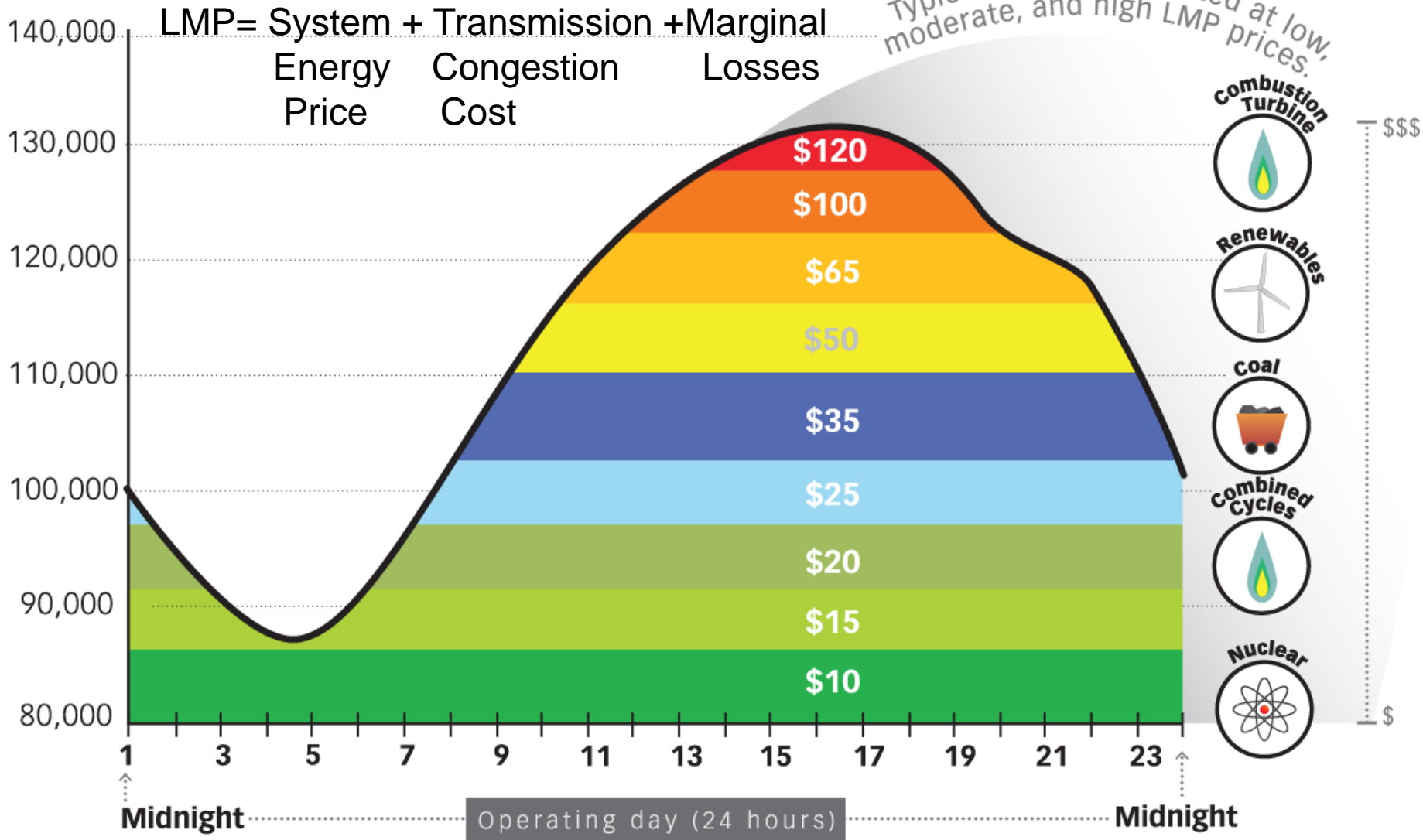
KEY STATISTICS

PJM member companies	850+
millions of people served	61
peak load in megawatts	165,492
MW of generating capacity	183,604
miles of transmission lines	62,556
2012 GWh of annual energy generation	793,679
sources	1,376
square miles of territory	243,417
area served	13 states + DC
externally facing tie lines	191

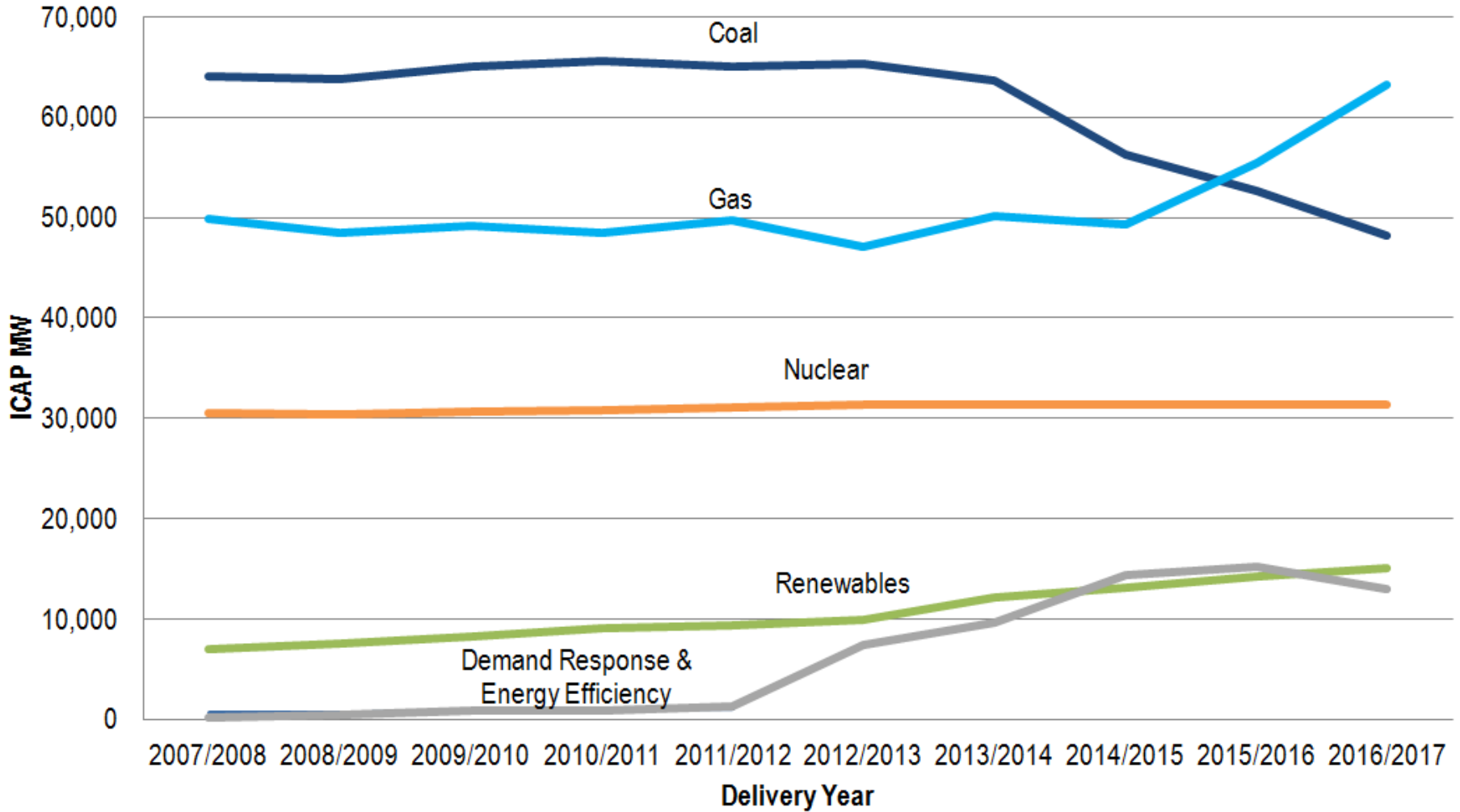
21% of U.S. GDP produced in PJM

As of 7/1/2013

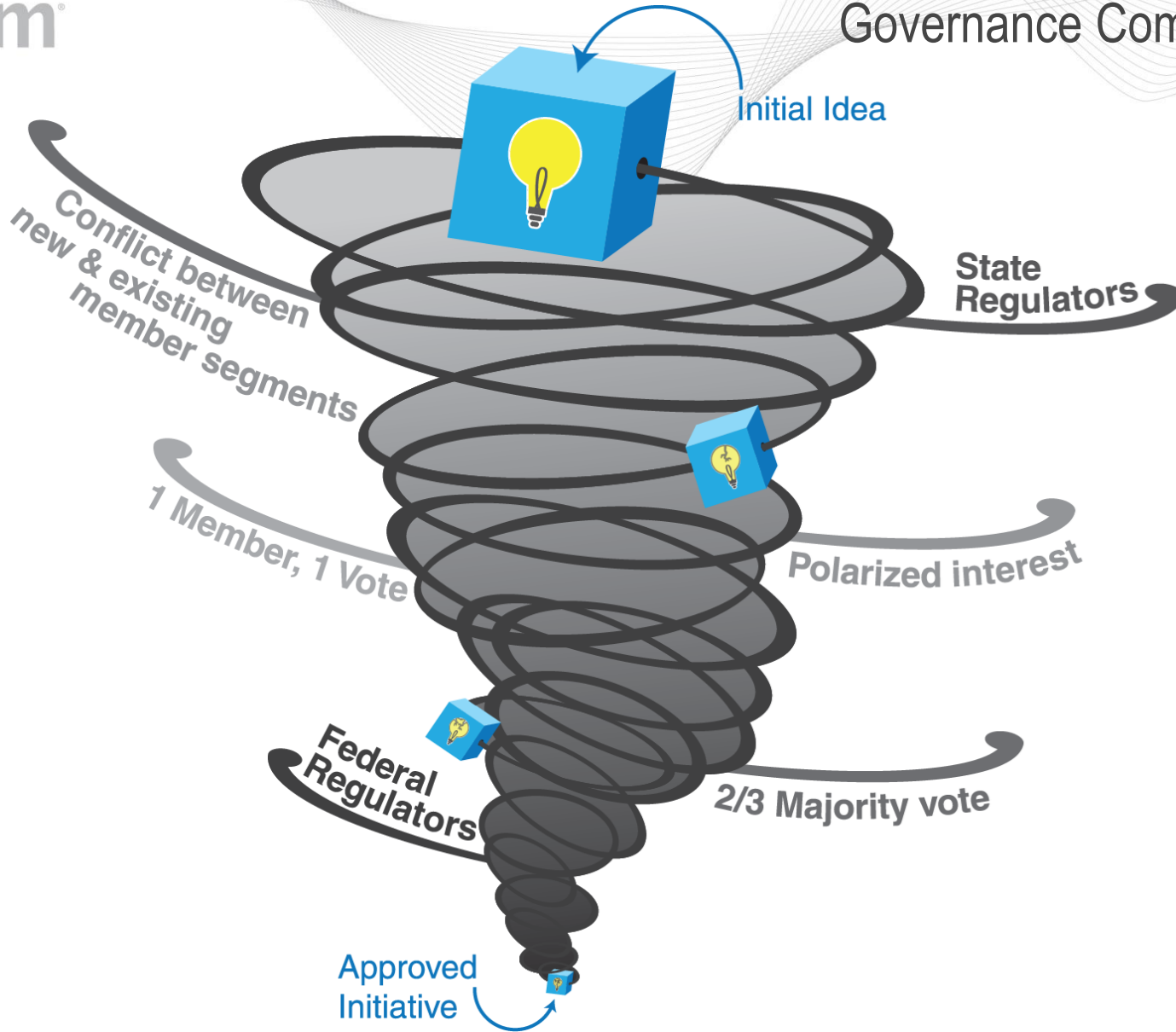




Cleared Installed Capacity

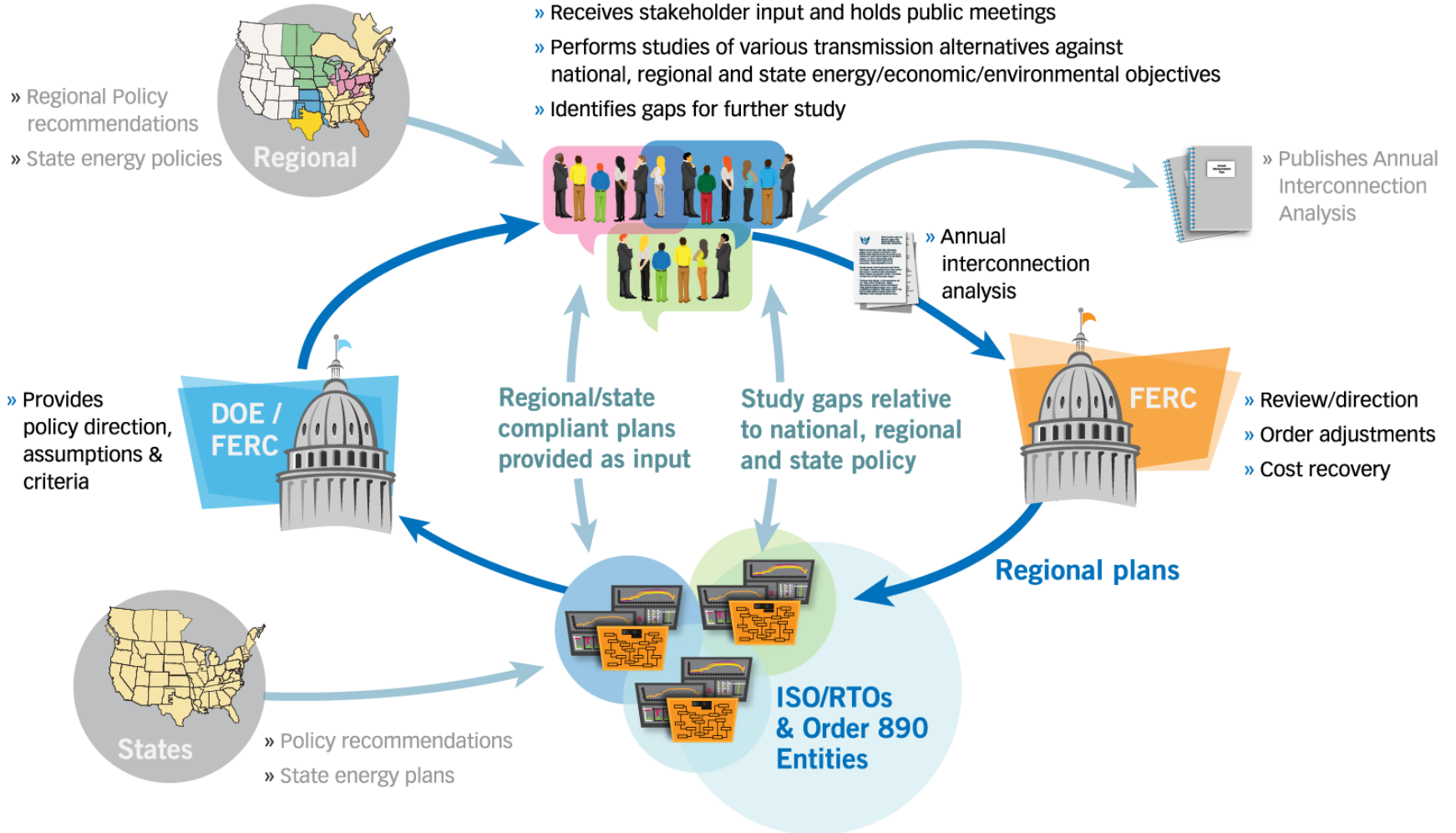


REGULATION LANDSCAPE



Planning

- » Rolls-up regional plans
- » Coordinates with Canada, Western Interconnect and Texas
- » Receives stakeholder input and holds public meetings
- » Performs studies of various transmission alternatives against national, regional and state energy/economic/environmental objectives
- » Identifies gaps for further study

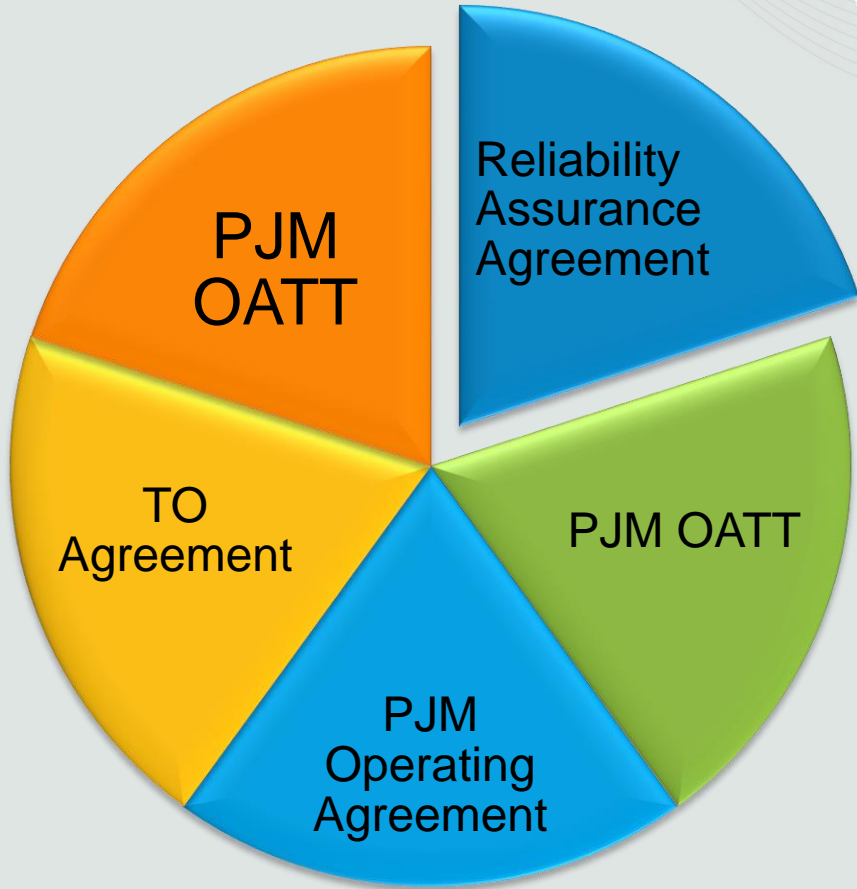


Regulators

- PJM coordinates the grid and administers the wholesale power market according to federal laws and regulations as well as within the requirements of each state which it serves.
 - Federal Energy Regulatory Commission
 - OPSI: State public utility commissions

NERC

- Under the Energy Policy Act of 2005, the Federal Energy Regulatory Commission (FERC) was required to designate an Electric Reliability Organization (ERO) to enforce mandatory reliability standards for all participants in the North American bulk power system.
- NERC named the ERO in July 2006.



- NERC Security Coordinator
- Regional Transmission Provider
- Regional Control Area Operator
- Market Developer & Coordinator
- Regional Transmission Planner

Independent Board

Members Committee

